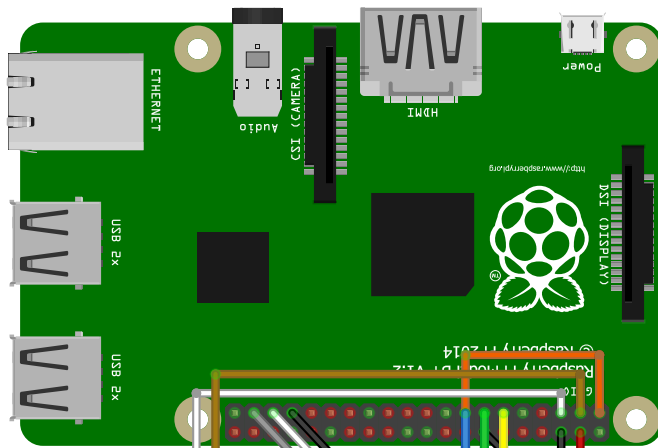
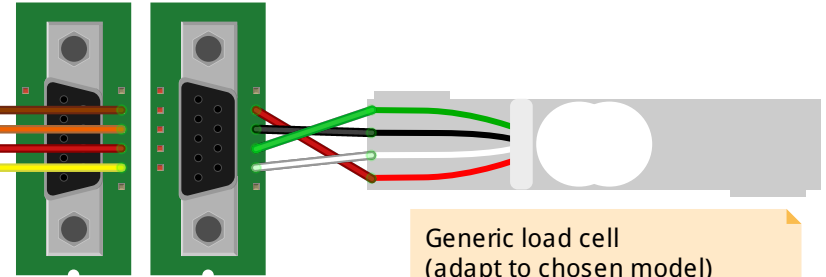
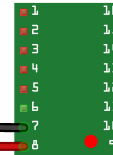


Raspberry Pi single-board computer. GPIO usage may vary on your set-up.



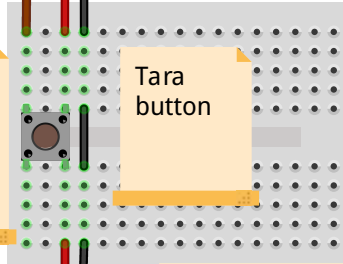
GSV-1L  
measurement  
amplifier



Generic load cell  
(adapt to chosen model)

DRV8825  
Stepper  
motor driver

Tara  
button

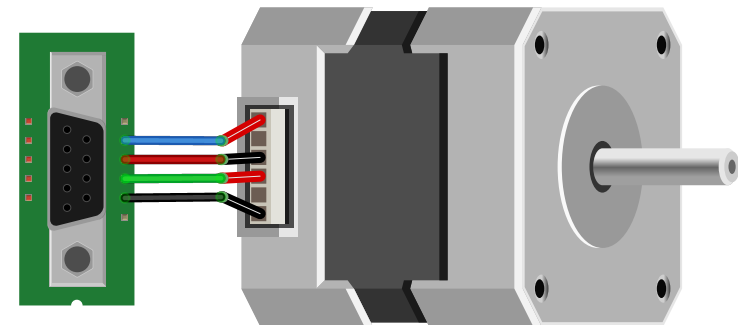
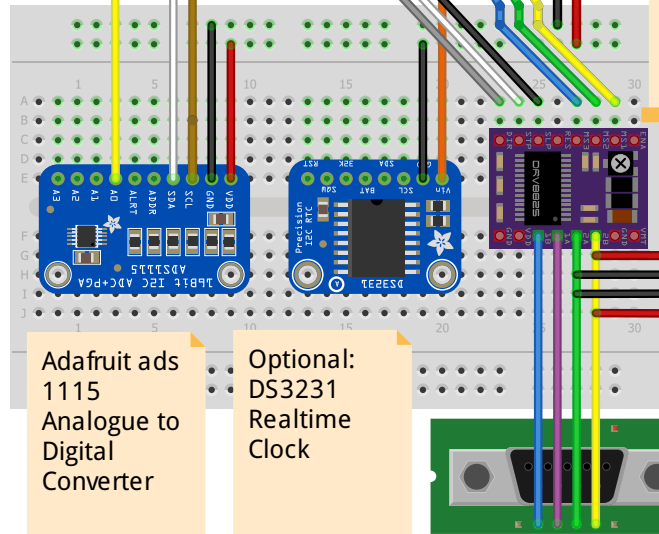


Laboratory power  
supply (10 - 24 V)  
Corresponding to  
specifications of  
GSV-1L amplifier.

Laboratory power  
supply (12 V; 0,4 A)  
Corresponding to  
stepper motor  
specifications

Adafruit ads  
1115  
Analogue to  
Digital  
Converter

Optional:  
DS3231  
Realtime  
Clock



Stepper motor (model may vary  
in your set-up)